

#2367

Duplex Maisonette in Kalamaria with Sea Side

 Kalamaria, Thessaloniki - Suburbs

€345,000





The information provided is for reference only and does not constitute legal or financial advice. All property details are subject to change without notice. Vista Estate ensures accuracy but assumes no liability for external factors or changes beyond our control.

Overview

Specifications

Bedrooms

 2

Bathrooms

 2

Covered

 85.23 m²

Type	Duplex Maisonette
Showers	2
Toilets	2
Uncovered veranda	11.79 m²
Status	Under construction

Furnished	Unfurnished
Structure	Concrete
Facade	Concrete
Energy efficiency rating	 A

Description

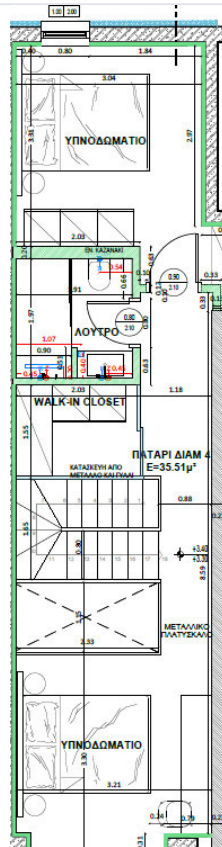
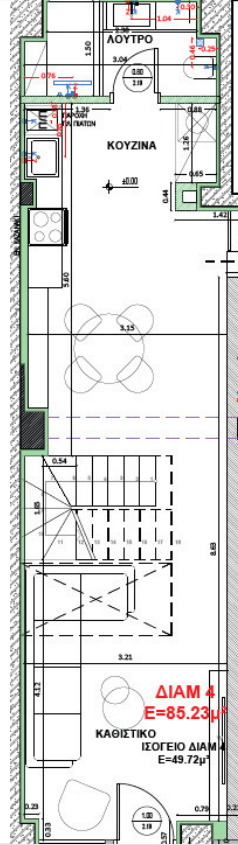
For sale: Modern duplex maisonette under construction, offering a total internal space of 85.23 m². This ground floor residence features two spacious bedrooms and two contemporary bathrooms, making it ideal for both families and professionals seeking comfort and functionality. Large east-facing windows invite natural light into the open-plan living areas, while impressive views—city, panoramic, and sea—create a stunning backdrop for daily life.

This property is situated in the desirable district of Kalamaria. Known for its lively seafront promenade, green parks, and excellent transportation links, Kalamaria blends urban convenience with a relaxed coastal lifestyle. The neighborhood offers quick access to the highway, bringing the city's vibrant center, shopping, dining, and leisure amenities within easy reach. Residents also benefit from being close to schools, healthcare, and recreational facilities, all while enjoying direct sea front living.

Built to the highest standards of energy efficiency class A, this maisonette is unfurnished, allowing you to personalize your new home from the very beginning. With construction progressing swiftly, now is the perfect time to secure your place in one of the area's most sought-after addresses. This unique property is advertised exclusively by Vista Estate.



Floor plans



Additional information

Facilities

Aircondition, Split system

Heating, Central, independent

Features

Balcony

Bright

Ceramic tiles

City view

Combined kitchen and dining area

Connected to electric mains

Corner

Double glazing

Easy access to highway

Easy access to main roads

En suite bathroom

En suite shower

Energy efficient doors/windows

Heart of city center

Internal stairs

Investment opportunity

Kitchenette

Luxury specifications

Modern design

Near amenities

Near bus route

Painted

Panoramic view

Roller blinds

Sea front

Sea view

Shower

Sound insulation

Thermal insulation

Tile flooring

Walk-in closet

Distances

Amenities

 20 m

Airport

 9.3 km

Sea

 200 m

Public transport

 30 m

Schools

 6.5 km

Contact us



George Gavrillidis

 (+30) 6987014883

 gg@vistaestate.gr

