

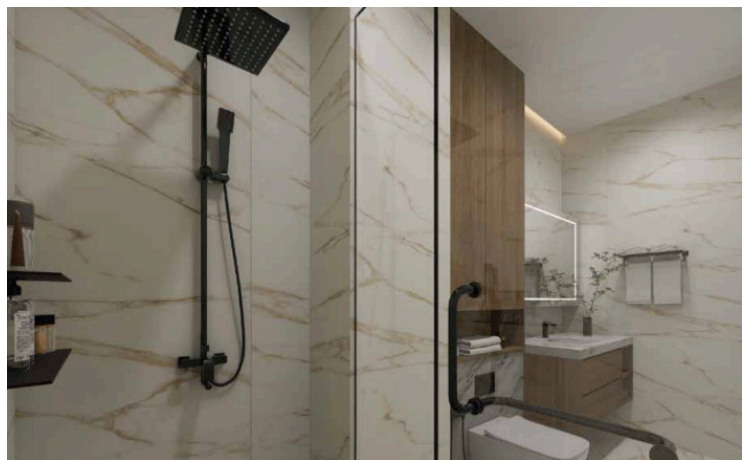
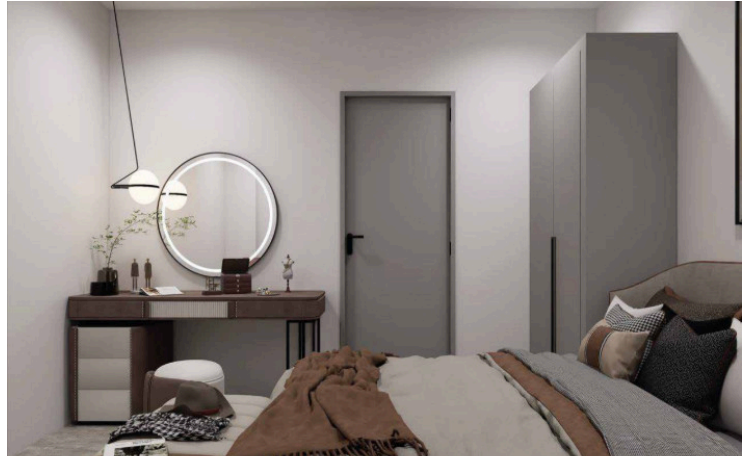
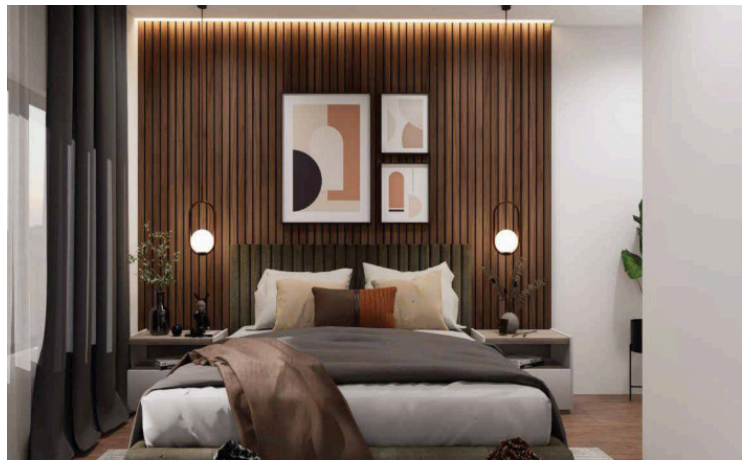
#2345

Modern Two Bedroom Apartment in Lisimaxias

 Koukaki, Athens - Center

€293,000





The information provided is for reference only and does not constitute legal or financial advice. All property details are subject to change without notice. Vista Estate ensures accuracy but assumes no liability for external factors or changes beyond our control.

Overview

Specifications

Bedrooms

 2

Bathrooms

 1

Covered

 67.24 m²

Type	Apartment
Showers	1
Toilets	1
Status	Under construction

Furnished	Unfurnished
Structure	Concrete
Facade	Concrete
Energy efficiency rating	 A

Description

For sale: a modern, under-construction apartment in the sought-after neighborhood of Koukaki. This spacious residence offers 67.24 square meters of well-designed interior space, featuring two comfortable bedrooms and a contemporary bathroom. The apartment is situated on the basement level, with convenient access via elevator, making it easily accessible for all.

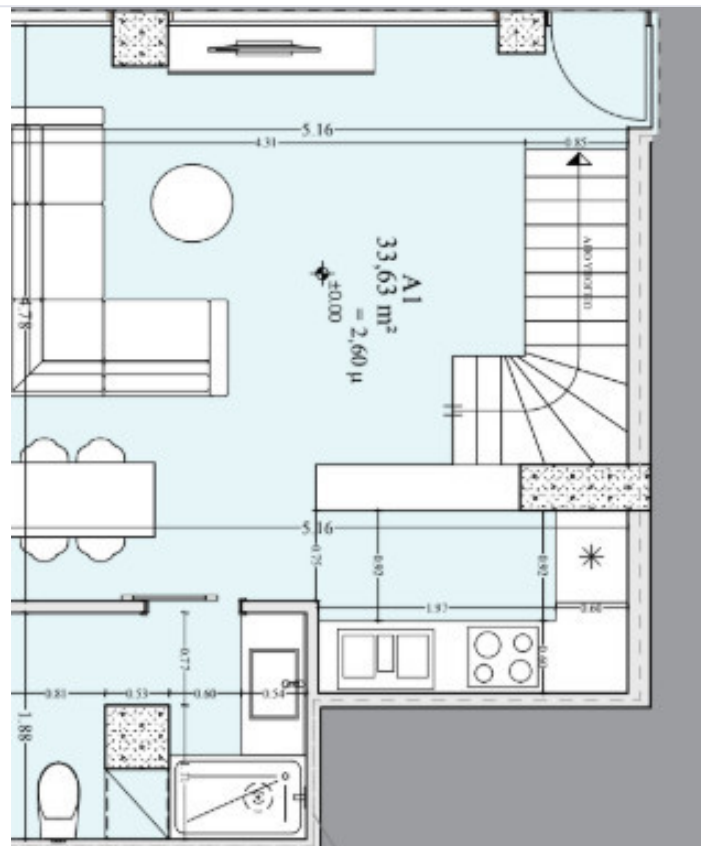
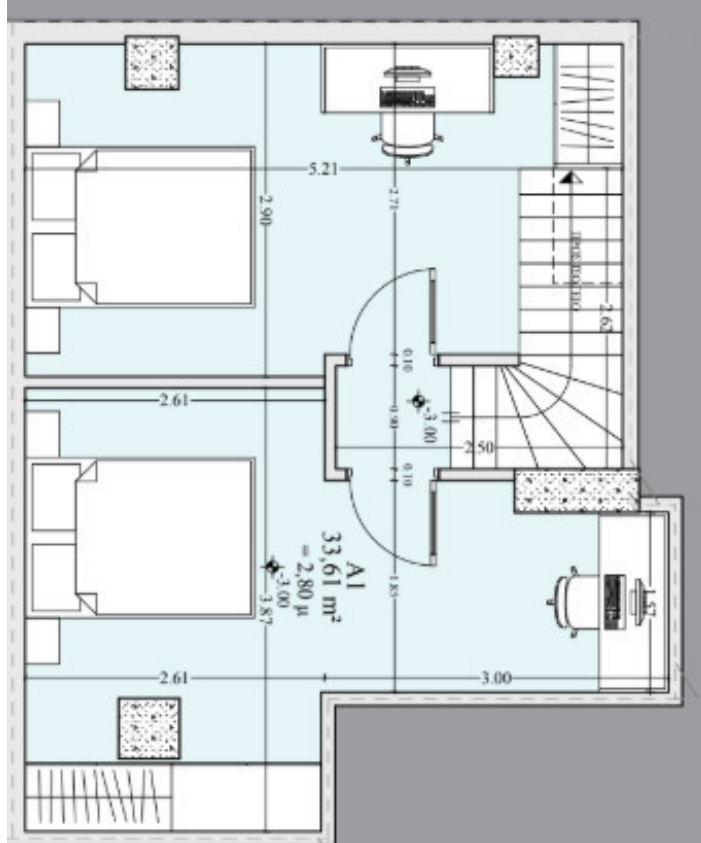
The property is north-east facing, filling the living spaces with natural light during the day. It has been fully renovated in 2026, boasting a sleek, modern design and high energy efficiency rating of A, ensuring lower energy costs and an eco-friendly lifestyle. The apartment is offered unfurnished, providing the perfect blank canvas for your personal style.

Koukaki is a vibrant and thriving area known for its unique blend of charm and urban convenience. Residents enjoy close proximity to the highway for easy commuting, as well as a variety of shops, cafes, and services just steps away. This neighborhood is favored for its lively atmosphere, green spaces, and easy access to city landmarks.

Don't miss this excellent opportunity to own a stylish, energy-efficient home in one of the city's most desirable locations. Advertised exclusively by Vista Estate, contact us today for more information or to schedule a viewing.



Floor plans



Additional information

Facilities

Aircondition, Split system

Elevator

Heating, Split system

Features

Central TV system

Combined kitchen and dining area

Connected to electric mains

Corner

Double glazing

Easy access to highway

Easy access to main roads

Energy efficient doors/windows

Heart of city center

Internal stairs

Internet

Investment opportunity

Kitchenette

Modern design

Near amenities

Near bus route

Painted

Shower

Sound insulation

Thermal insulation

Tile flooring

Distances

Amenities

 500 m

Airport

 33 km

Sea

 6.7 km

Public transport

 300 m

Schools

 180 m

Contact us



George Gavriliadis

 (+30) 6987014883

 gg@vistaestate.gr

