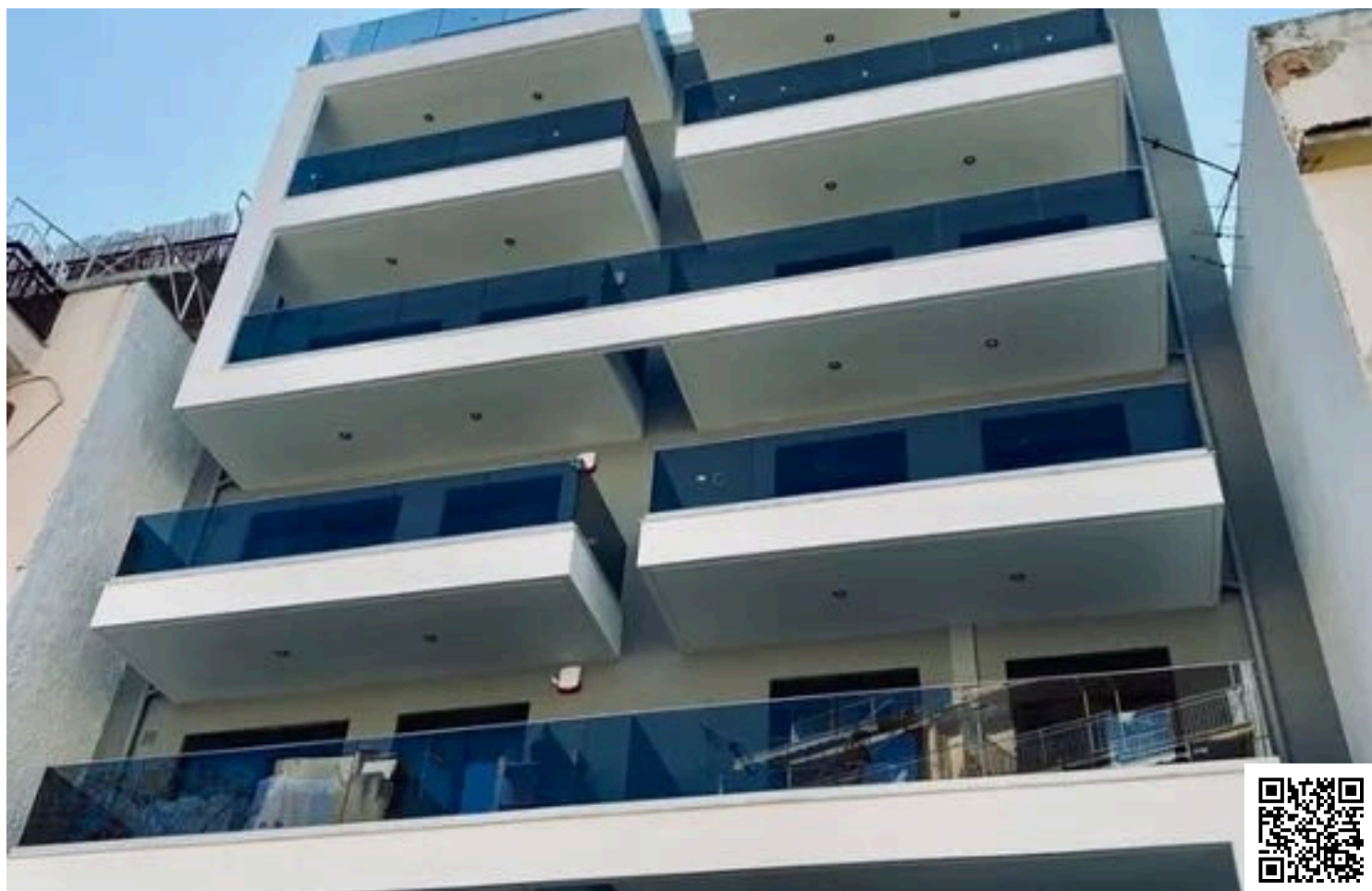


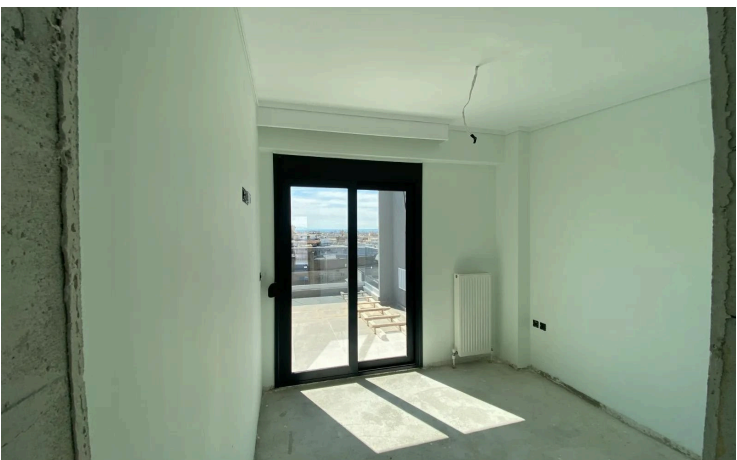
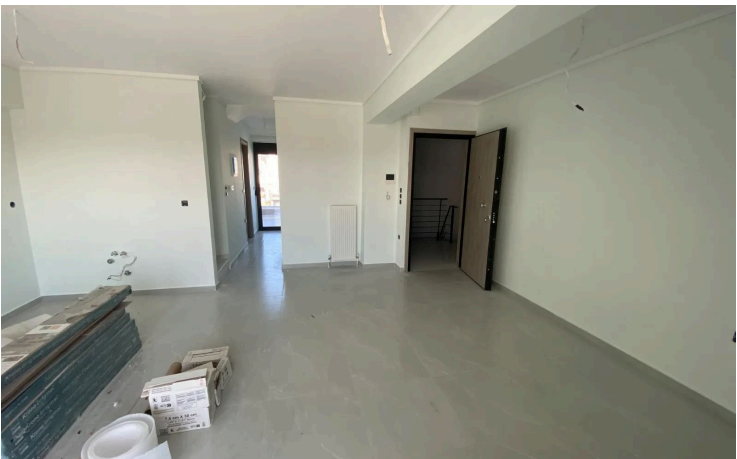
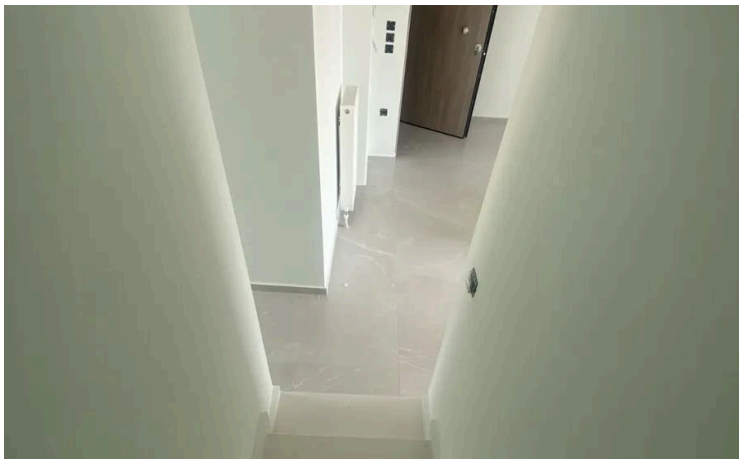
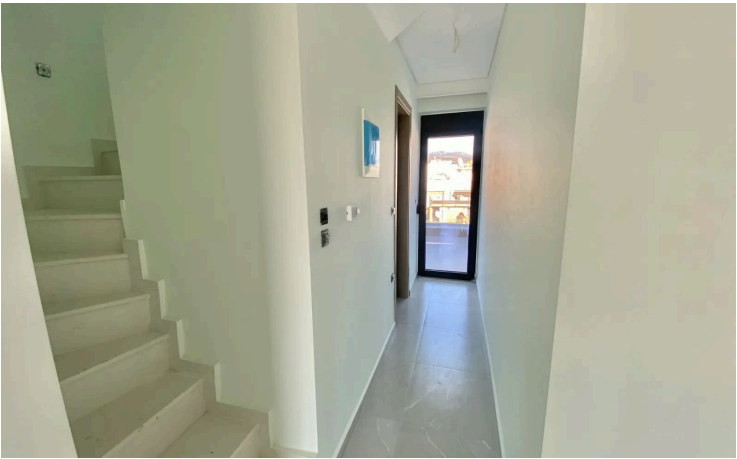
#1375

# Modern Maisonette Penthouse in Mpotsari

 Mpotsari, Thessaloniki - Center





**€290,000**





# Overview

## Specifications

|  |  |  |  |  |  |
|--|--|--|--|--|--|
| Bedrooms   |  | Bathrooms  |  | Covered  |  |
|  2 |  |  2    |  |  104 m <sup>2</sup> |  |
| Type   |  | Maisonette   |  |  |  |
| Showers  |  | 2  |  |  |  |
| Toilets  |  | 2  |  |  |  |
| Status   |  | Key ready  |  |  |  |
| Year of construction   |  | 2025   |  |  |  |
| Title deed   |  | Yes  |  |  |  |
| Furnished  |  | Unfurnished  |  |  |  |
| Structure  |  | Concrete   |  |  |  |
| Facade   |  | Concrete   |  |  |  |
| Energy efficiency rating   |  |  A+ |  |  |  |

## Description

Modern maisonette penthouse in excellent, key-ready condition, offering comfortable living in the sought-after area of Mpotsari. Built in 2025, this property features an internal space of 104 m<sup>2</sup>, perfectly designed to balance style and functionality.

This home includes two spacious bedrooms and two contemporary bathrooms, ideal for couples, small families, or those working from home. Enjoy the north-facing aspect, which provides plenty of natural light without the harsh sun. The penthouse can be accessed directly via elevator, ensuring ease and privacy.

Mpotsari is a vibrant neighborhood known for its quiet, residential character, tree-lined streets, and easy access to city amenities. The area combines a relaxed atmosphere with convenient stores, cafes, and parks nearby, making it a popular choice for professionals and families alike.

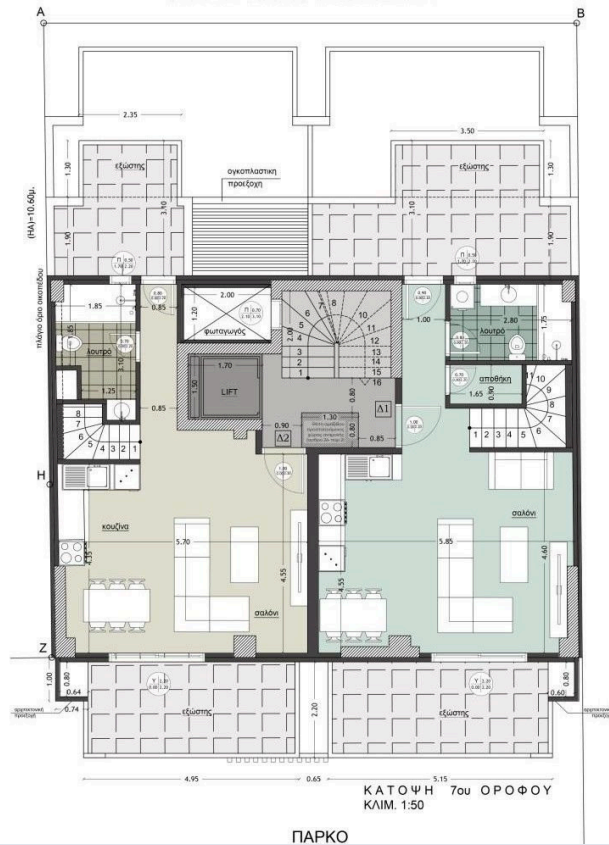
Enjoy peace of mind with an A+ energy efficiency rating, guaranteeing low utility bills and a modern, eco-friendly living environment. The property is offered unfurnished, ready for you to add your personal touch.

This maisonette penthouse is listed by Vista Estate, where we are dedicated to helping you find your ideal home. Contact us today to arrange a viewing.





# Floor plans



# Additional information

## Facilities

Aircondition, Split system

Elevator

Heating, Split system

Parking, Underground

Storage

## Features

Balcony

Double glazing

Energy efficient doors/windows

Sound insulation

Thermal insulation

Tile flooring

## Distances

Amenities



200 m

Airport



13 km

Public transport



300 m

## Contact us



**Thomas Noutsos**

 (+30) 6996533636

 tn@vistaestate.gr

