

#1295

# Spacious Maisonette in Vibrant Kaftatzogleio Area

 Doxa, Thessaloniki - Center

**€300,000**











The information provided is for reference only and does not constitute legal or financial advice. All property details are subject to change without notice. Vista Estate ensures accuracy but assumes no liability for external factors or changes beyond our control.

# Overview

## Specifications

Bedrooms		Bathrooms		Covered	
 1		 1		 88 m <sup>2</sup>	
Type	Maisonette				
Showers	1				
Toilets	1				
Status	Under construction				
Title deed	Yes				
Furnished	Unfurnished				
Structure	Concrete				
Facade	Concrete				
Energy efficiency rating	 A+				

## Description

Bright and modern maisonette under construction, offering a total internal space of 88 m2. Designed across the 5th and 6th floors with elevator access, this property features one spacious bedroom and a stylish bathroom. The layout includes a basement area, providing additional storage or flexible use to suit your needs.

The home faces north-east, ensuring ample natural light throughout the day, and panoramic city views that can be enjoyed from the upper floor. Energy efficiency is rated A+, offering smart underfloor heating for comfort and cost savings. The property is offered unfurnished, giving you the freedom to personalize each space to your taste.

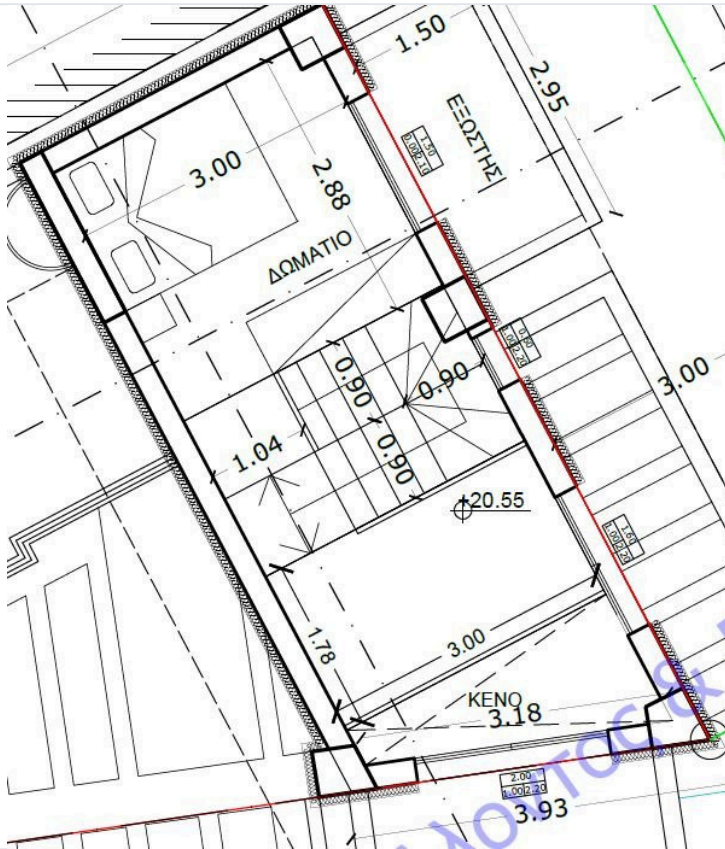
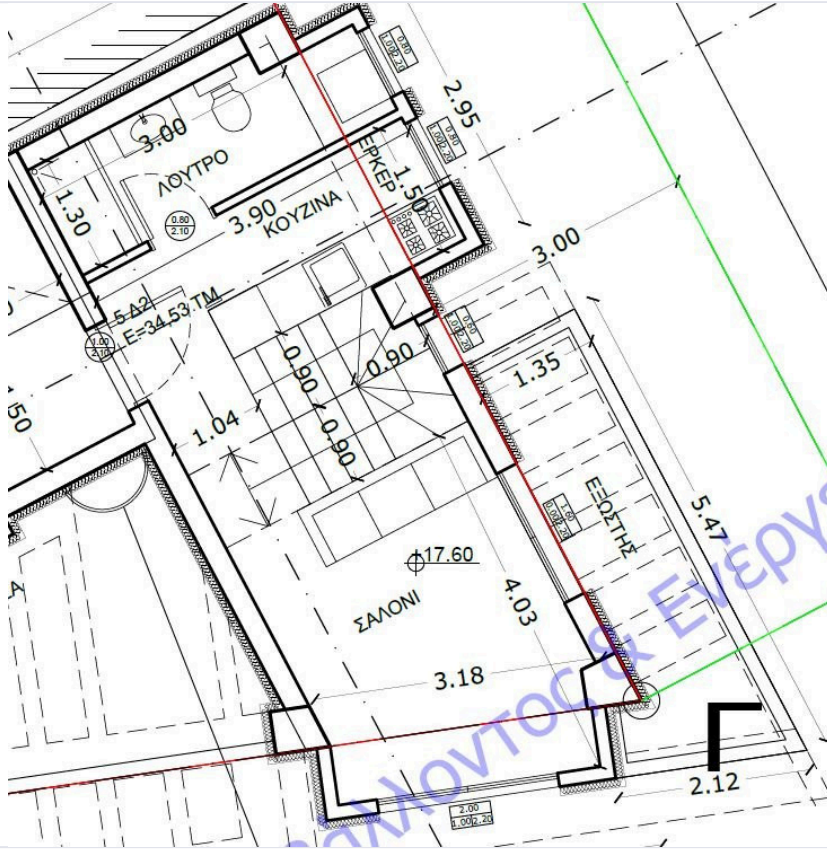
Located in the sought-after area of Doxa, a lively neighborhood known for its blend of peaceful residential charm and easy access to city amenities. The area is well connected, with quick access to major highways, public transportation, shops, and popular cafes. Residents benefit from both serene surroundings and the convenience of city living.

This is an excellent opportunity for those seeking a new, energy-efficient home in a prime location with stunning views. Listing by Vista Estate.





## Floor plans



The information provided is for reference only and does not constitute legal or financial advice. All property details are subject to change without notice. Vista Estate ensures accuracy but assumes no liability for external factors or changes beyond our control.

# Additional information





## Facilities

Aircondition, Split system	Elevator	Heating, Underfloor
Parking, Uncovered	Solar photovoltaic panels	Solar water heater
Storage		

## Features

Alarm system (provision)	Balcony	Bathroom underfloor heating
Bright	Ceramic tiles	City view
Connected to electric mains	Corner	Double glazing
Easy access to highway	Easy access to main roads	Energy efficient doors/windows
Internal stairs	Kitchen appliances	Luxury specifications
Modern design	Near amenities	Near bus route
Next to green area	Painted	Panoramic view
Quiet area	Rental potential	Separate dining area
Shower	Shutters	Sound insulation
Thermal insulation	Tile flooring	

## Distances

Amenities  300 m	Airport  13 km	Sea  1.2 km
Public transport  300 m		



# Contact us



**Thomas Noutsos**

 (+30) 6996533636

 [tn@vistaestate.gr](mailto:tn@vistaestate.gr)

