

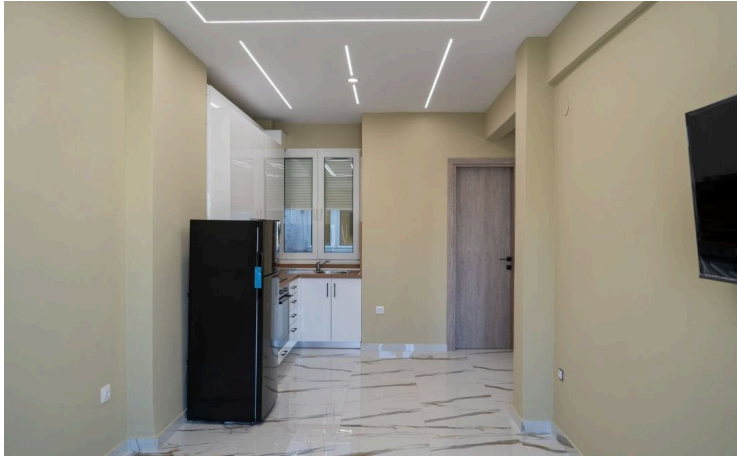
#1133

Investment Property 210 sq.m. in Thessaloniki – Ideal for Golden Visa

 Xirokrini, Thessaloniki - Center

€840,000





Overview

Specifications

Bedrooms

 5


Bathrooms

 4

Covered

 210 m²

Type	Apartment
Showers	4
Toilets	4
Status	Key ready
Title deed	Yes

Furnished	Partially furnished
Structure	Concrete
Facade	Concrete
Energy efficiency rating	 C

Description

Located in the area of Xirokrini, Thessaloniki, this 210 sq.m. property offers an exceptional investment opportunity in a prime location with excellent public transportation access.

The space is divided into four modern, fully functional apartments, all under one ownership title!

One apartment features two bedrooms and a large balcony.

The remaining three apartments each offer one bedroom, ideal for long-term living or short-term rental use.

All units are delivered partially furnished and equipped with electrical appliances.

Key Location Advantages:

90 meters from a city bus stop

500 meters from the metro station

Direct access to Thessaloniki's Central Train Station

With modern renovation, strategic location, and high rental demand in the area, this property is perfect for investment purposes and qualifies buyers for the Golden Visa Program. For further information or to arrange a viewing, contact



Additional information

Facilities

Aircondition, Split system

Elevator

Heating, Central, independent

Storage

Features

Balcony

Bright

Central satellite system

Ceramic tiles

Combined kitchen and dining area

Double glazing

Easy access to highway

Easy access to main roads

Energy efficient doors/windows

Fly screens

Gas heaters

Internet

Kitchen appliances

Luxury specifications

Modern design

Near amenities

Near bus route

Painted

Shower

Shutters

Sound insulation

Spacious rooms

Suitable for work

Thermal insulation

Distances

Amenities

 50 m

Airport

 16 km

Sea

 2 km

Public transport

 90 m

Schools

 350 m

Contact us



Thomas Noutsos

 (+30) 6996533636

 tn@vistaestate.gr

